



THE DEVELOPER'S CONFERENCE

Desconstruindo Sistemas Legados

Carlos Augusto Alves

Microsoft Certified Solutions Developer | Software Engineer | Tech Lead

Carlos Augusto Alves (vulgo CA)



THE
DEVELOPER'S
CONFERENCE

- Tech Lead | Engenheiro de TI – Itaú Unibanco.
- Cursando Mestrado em Inteligência Artificial – USP.
- Desenvolvedor à mais de 10 anos.
- Apaixonado por arquitetura e design de software.



<https://www.linkedin.com/in/carlos-alves-86758726>



<https://github.com/CarlosAugustoAlves>



@CarlosAgtAlves

Microsoft
CERTIFIED

Solutions Developer

App Builder

Microsoft
CERTIFIED

Professional

Microsoft
CERTIFIED

Solutions Associate

Web Applications

Microsoft
CERTIFIED

Technology Specialist

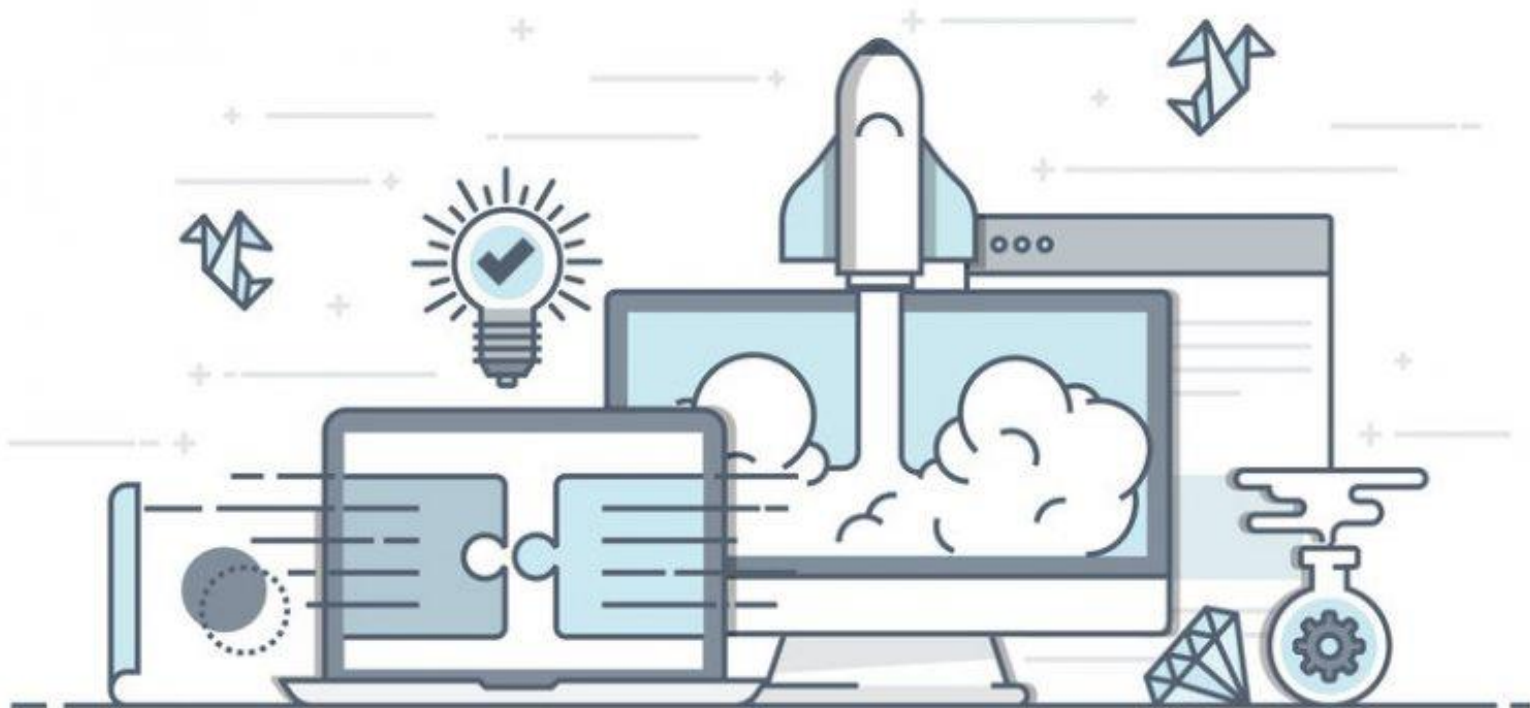
Microsoft Dynamics
CRM 2011 Customization
& Configuration



≡



Escalabilidade



Assessment



legacy

Migration



Definition



modern



Deployment

ASSESSMENT



DEFINITION



LEGACY SYSTEM FUNCTIONS



MIGRATION



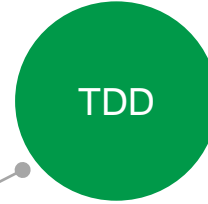
SOLID Principles

Don't Repeat Yourself



DRY

Test Driven Development



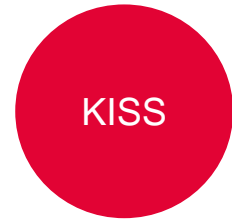
TDD

You Aren't Gonna Need It



YAGNI

Keep It Simple Stupid



KISS

SOLID





EXTERNALIZED
CONFIGURATION

VERSIONAMENTO

RESILIÊNCIA

APLICAÇÃO

OBSERVABILITY

INFRASTRUTURE
AS CODE

DEPLOYMENT

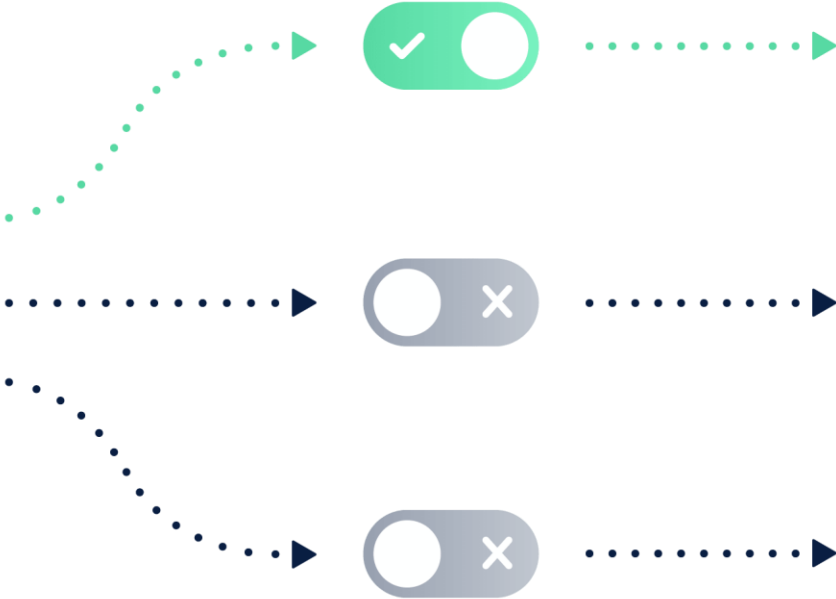


Strangler Pattern

New feature

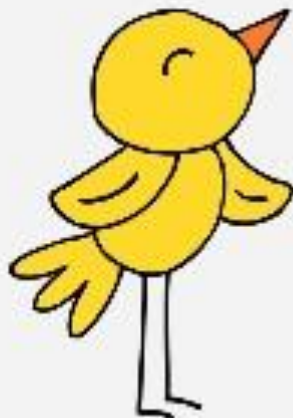
Feature Flags

Customers



Canary Release

“Canary release is a technique to reduce the risk of introducing a new software version in production by slowly rolling out the change to a small subset of users before rolling it out to the entire infrastructure and making it available to everybody.”



NETFLIX

Obrigado!!! ;)

Obrigado!!! xD



THE DEVELOPER'S CONFERENCE

Carlos Augusto Alves (CA)



<https://www.linkedin.com/in/carlos-alves-86758726>